



211/3 Palm Avenue Breakfast Point NSW

1 1 1

Situated on level two of the 'Scarborough' building in the heart of Breakfast Point village, directly opposite Silkstone Park, this beautifully presented apartment enjoys a lush, green outlook across the Jacarandas and Crepe Myrtles of Rosewater Circuit and benefits from no neighbors opposite, ensuring total privacy. The apartment includes a generous balcony for entertaining, accessed from both the lounge room and bedroom. As part of the Harbour precinct the home enjoys access to the the finest pool in Breakfast Point in addition to the Country Club

Additional Features:

- Stylish kitchen features integrated Miele appliances and 40mm Caesarstone benchtops with breakfast bar
- Luxurious bathroom with frameless glass shower

Type : Apartment

Price : \$975,000

View : <https://www.pointresidential.com.au/8675641>



Ashley Quinn
02 8765 8300

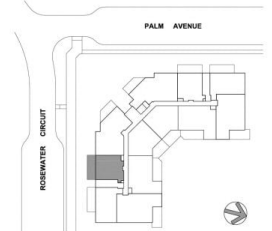
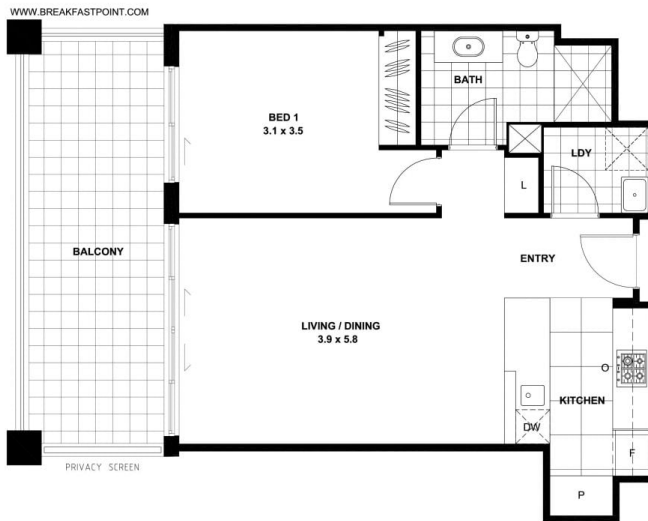
[For full version visit the website](https://www.pointresidential.com.au)



SCARBOROUGH
No. 3 Palm Avenue

Apartment No. 211
Lot No. 23

ISSUE A: 26.09.2011



FLOOR AREA	60 sqm
BALCONY	17 sqm
TOTAL	77 sqm

Please note that this floor plan was produced prior to completion of construction and is intended to serve as a guide only. The information contained herein is believed to be correct but is not guaranteed. Dimensions are approximate. Changes may be made during construction and dimensions, areas, fittings, finishes and specifications are subject to change without notice in accordance with the provisions of the Contract for Sale of Land. Prospective purchasers must refer to the Contract for Sale of Land for the list of inclusions. Any plantings shown are indicative only. Prospective purchasers must rely on their own enquiries. All graphics, including the layout, balustrades, borders and surrounding devices are indicative only. Note: Balustrades necessary for services are not depicted. Floor plans may be at an unmodified scale. This drawing and the design herein is the property of Rose Architectural Design and shall not be copied or reproduced in part or in whole without written permission.