



**513/17 Woodlands Avenue Breakfast Point NSW**

2 2 2

Perched on the level 5, corner position of the Providence building, this north facing apartment enjoys one of the largest floor plans in the building with an additional study area, well separated from the living and bedroom zones. With twin balconies offering partial water views, windows wrapping around the apartment and a highly valuable double car space plus storage cage, an excellent opportunity presents itself.

Additional Features:

- Bespoke Miele kitchen with plenty of storage
- Luxurious bathrooms including an ensuite with a window for natural light and ventilation
- Air conditioning to lounge and both bedrooms
- LED down lights throughout

**Type** : Apartment

**View** : <https://www.pointresidential.com.au/8636983>



**Ashley Quinn**  
02 8765 8300

[For full version visit the website](https://www.pointresidential.com.au)

# P

## PROVIDENCE

BREAKFAST POINT

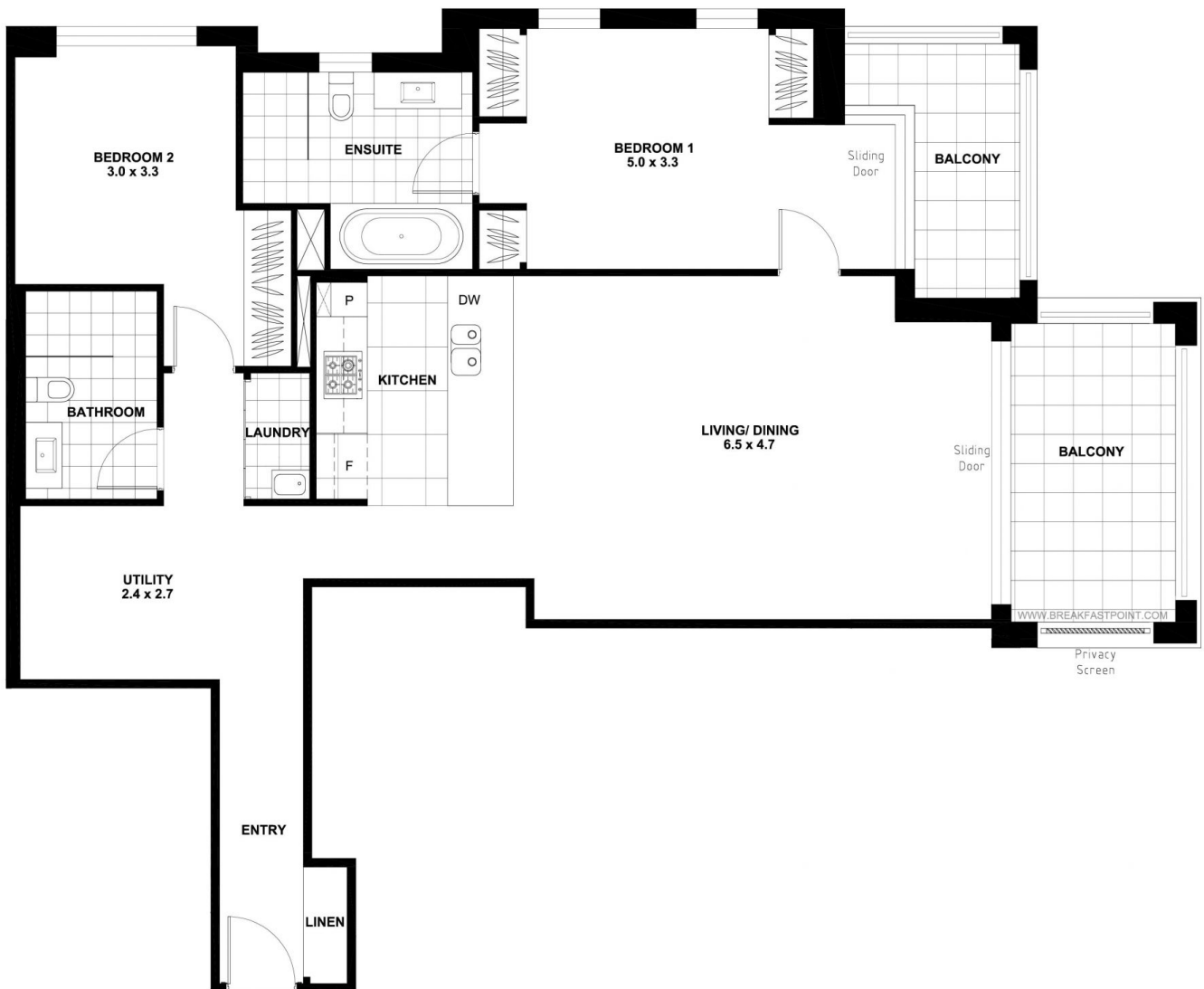
**Apt No. 513**  
Lot No. 67

Internal Floor Area 105 m<sup>2</sup>  
External Area 14 m<sup>2</sup>

TOTAL 119 m<sup>2</sup>

 7 m<sup>3</sup>

 Premium [5.7m]



17 Woodlands Avenue



ISSUE B: 21.Aug.2015

  
**ROSE**  
Creating a quality way of living

Please note that this floor plan was produced prior to completion of construction and is intended to serve as a guide only. The information contained herein is believed to be correct but is not guaranteed. Dimensions are approximate. Changes may be made during construction and dimensions, areas, fittings, finishes and specifications are subject to change without notice in accordance with the provisions of the Contract for Sale of Land. Prospective purchasers must refer to the Contract for Sale of Land for the list of inclusions. Any plantings shown are indicative only. Prospective purchasers must rely on their own enquiries. All graphics, including tile layout, balustrades, louvres and sunshading devices are indicative only. Note: Bulkheads necessary for services are not depicted. Floor plans may be at an unspecified scale. This drawing and the design herein is the property of Rose Architectural Design and shall not be copied or reproduced in part or in whole without written permission.