



**707/2 Palm Avenue Breakfast Point NSW**

2  2  1 

Occupying the level 7 corner position in the popular Vermont building, this bright and airy 2 bedroom apartment offers a popular layout with bedrooms well separated and a lounge/dining that opens on to a spacious terrace. Brand new timber floors installed throughout and offering angled City & Bridge views in one direction from both the terrace and second bedroom and water views in another direction. Just a short walk to both the Shopping Village & waterfront walking path.

Additional features include:

- LED down lights
- Miele gas kitchen
- Air conditioned
- Frameless glass walk in showers

**Type** : Apartment

**View** : <https://www.pointresidential.com.au/8630097>



**Ashley Quinn**  
02 8765 8300

[For full version visit the website](https://www.pointresidential.com.au)

# V

## VERMONT

Breakfast Point

2 Palm Avenue

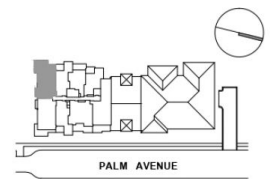
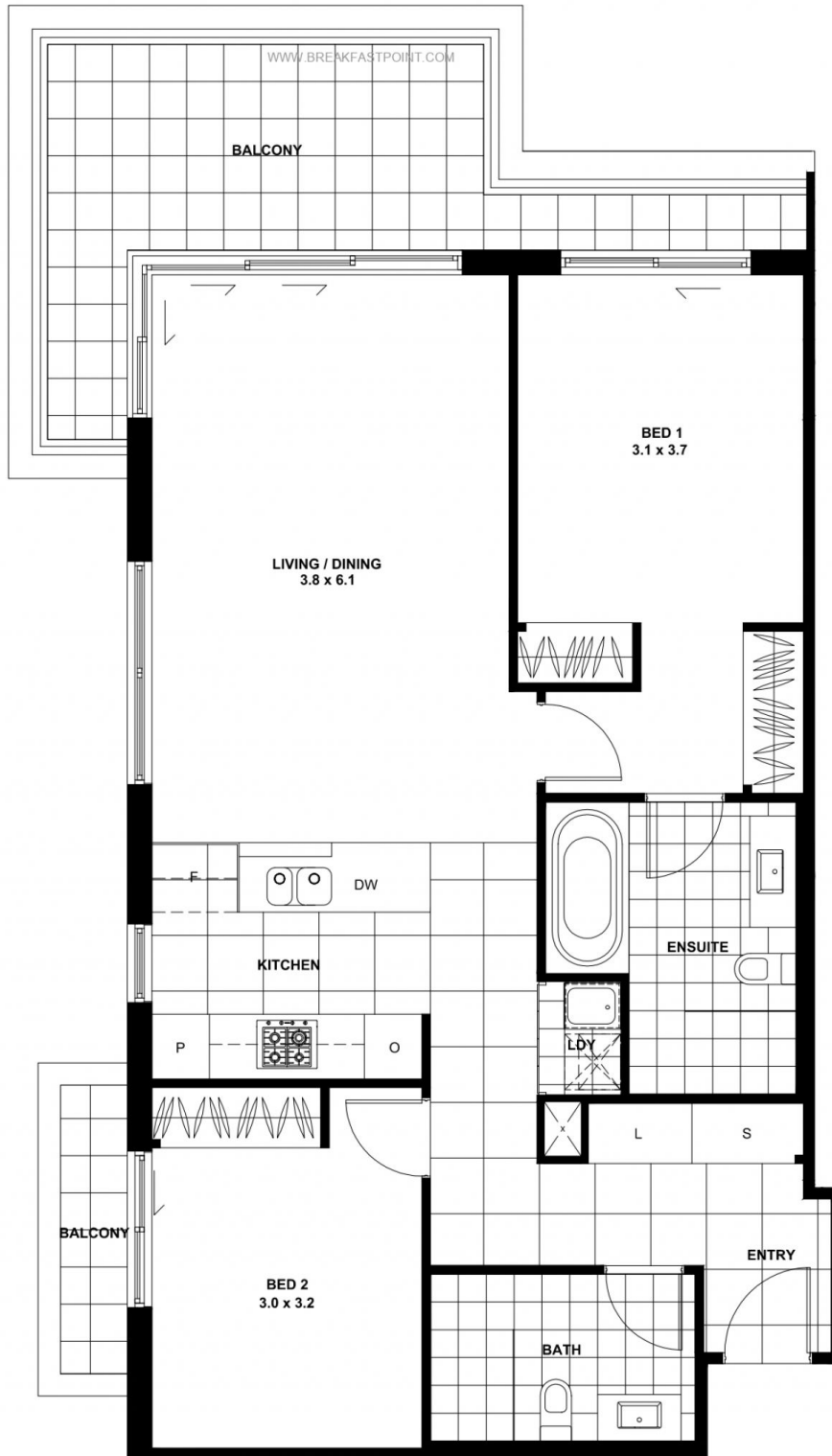
**Apt No. 707**

Lot No. 99

Floor Area 87 m<sup>2</sup>  
Balcony 16 m<sup>2</sup>

**TOTAL 103 m<sup>2</sup>**

ISSUE C: 16.09.2014



Please note that this floor plan was produced prior to completion of construction and is intended to serve as a guide only. The information contained herein is believed to be correct but is not guaranteed. Dimensions are approximate. Changes may be made during construction and dimensions, areas, fittings, finishes and specifications are subject to change without notice in accordance with the provisions of the Contract for Sale of Land. Prospective purchasers must refer to the Contract for Sale of Land for the list of inclusions. Any plantings shown are indicative only. Prospective purchasers must rely on their own enquiries. All graphics, including tile layout, balustrades, louvres and sunshading devices are indicative only. Note: Bulkheads necessary for services are not depicted. Floor plans may be at an unspecified scale. This drawing and the design herein is the property of Rose Architectural Design and shall not be copied or reproduced in part or in whole without written permission.