

**111/7-11 Magnolia Drive Breakfast Point NSW**

1 1 1

Peacefully private and generously proportioned, this charming and unique ground floor apartment offers one of the largest one-bedroom plus study floor plans in Breakfast Point and is the only dual-access apartment in the building. The home offers seamless indoor/outdoor living with an elevated courtyard and lush garden, perfect for entertaining but still low maintenance. Enjoying a convenient location, just moments to the Silkstone Park, Country Club, cafes, IGA and transport, this beautiful apartment makes an excellent choice for those looking to take full advantage of the unique Breakfast Point lifestyle.

**Additional Features:**

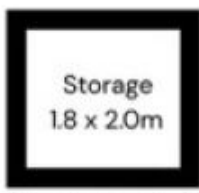
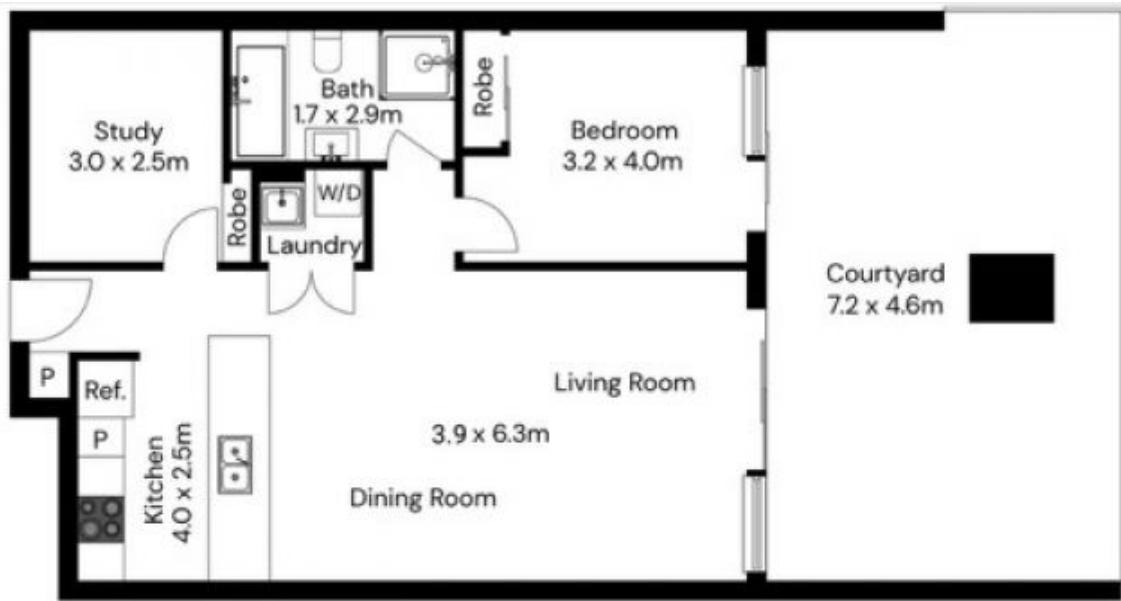
- Spacious integrated living/dining zone flowing to the generously sized part-covered courtyard with Crimsafe

**Type** : Apartment  
**Price** : \$ 1,135,000  
**View** : <https://www.pointresidential.com.au/8589924>



**Ashley Quinn**  
**02 8765 8300**

[For full version visit the website](https://www.pointresidential.com.au)



(Not In Position)



(Not In Position)

