

POINT

RESIDENTIAL

SOLD OFF MARKET



502/50 Peninsula Drive Breakfast Point NSW

1 1 1

Enjoying an elevated position with angled views, this sleek modern apartment in the Catalina building is only footsteps away from the waterfront. Designed on one level with spacious interiors, a separate study and a lounge room that flows to a sheltered terrace, the apartment offers fresh interiors and generous proportions. A low maintenance lifestyle in an ultra-convenient location whilst enjoying some of the most affordable strata levies in Breakfast Point, only \$1,287pq.

Additional Features

- Separate, enclosed study
- Bespoke Miele kitchen with abundant storage
- Luxurious bathroom with frameless glass walk in shower
- Air conditioning, video intercom entrance and internal

Type : Apartment

View : <https://www.pointresidential.com.au/8570097>



Ashley Quinn
02 8765 8300

[For full version visit the website](https://www.pointresidential.com.au)



CATALINA

50 Peninsula Drive

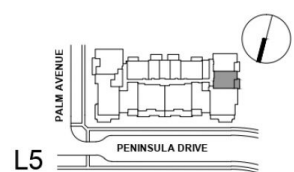
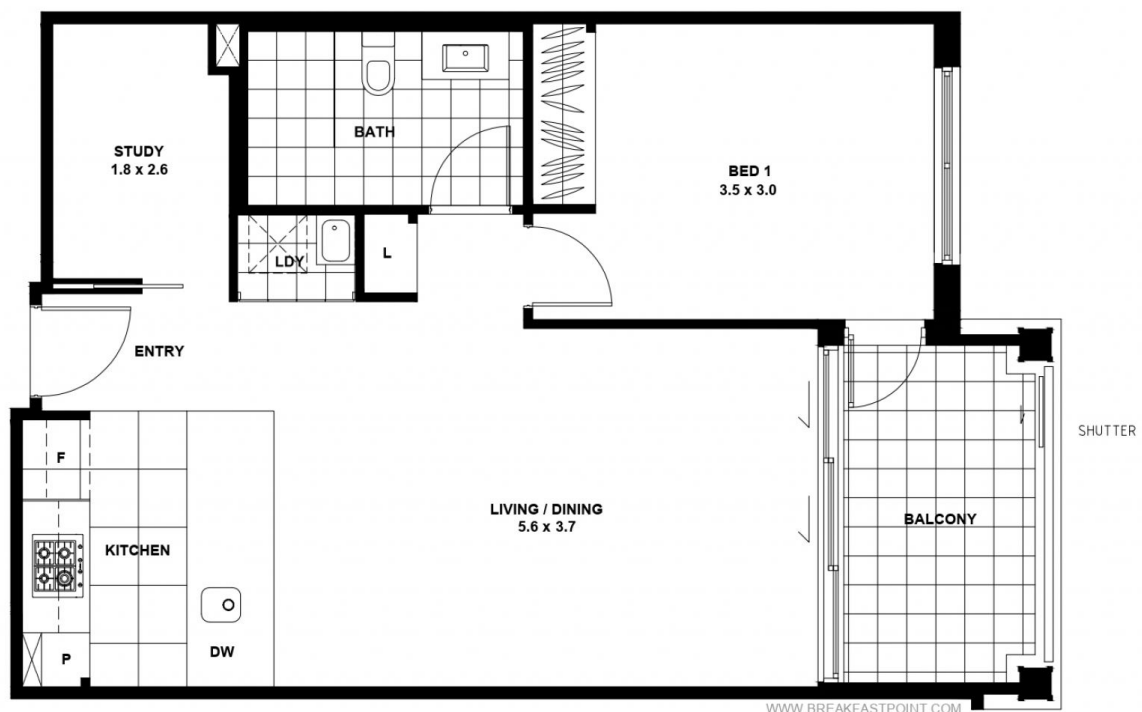
Apt No. 502

Lot No. 47

Floor Area 59 m²
Balcony 6 m²

TOTAL 65 m²

ISSUE A: 13.09.2014



Please note that this floor plan was produced prior to completion of construction and is intended to serve as a guide only. The information contained herein is believed to be correct but is not guaranteed. Dimensions are approximate. Changes may be made during construction and dimensions, areas, fittings, finishes and specifications are subject to change without notice in accordance with the provisions of the Contract for Sale of Land. Prospective purchasers must refer to the Contract for Sale of Land for the list of inclusions. Any plantings shown are indicative only. Prospective purchasers must rely on their own enquiries. All graphics, including tile layout, balustrades, louvres and sunshading devices are indicative only. Note: Bulkheads necessary for services are not depicted. Floor plans may be at an unspecified scale. This drawing and the design herein is the property of Rose Architectural Design and shall not be copied or reproduced in part or in whole without written permission.