



205/2 Palm Avenue Breakfast Point NSW

1 1 1

Set within the popular Vermont building, this spacious one bedroom apartment enjoys tranquil views across the gardens of the Seashores precinct to the historic Plumbers Workshop. Offering a functional layout with both lounge area and bedroom having direct access to the terrace and only a short stroll to the foreshore.

Additional Features:

- Updated carpet and paint
- Miele gas kitchen with breakfast bar and Caesarstone benchtops
- Luxurious bathroom with a frameless glass walk in shower
- LED downlights
- NBN and Foxtel enabled

Type : Apartment

View : <https://www.pointresidential.com.au/8559687>



Ashley Quinn
02 8765 8300

[For full version visit the website](https://www.pointresidential.com.au)



VERMONT
Breakfast Point

2 Palm Avenue

Apt No. 205

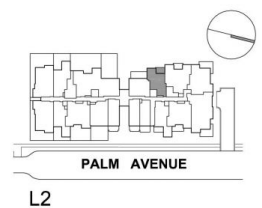
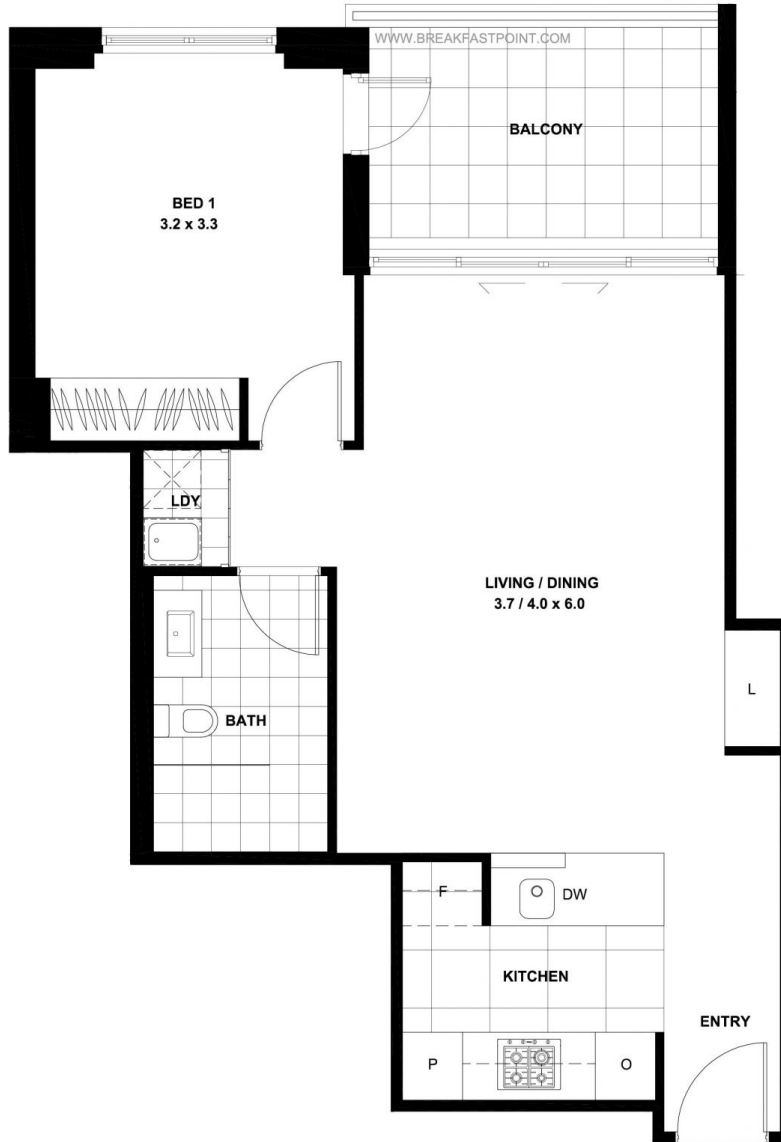
Lot No. 13

Floor Area 56 m²

Balcony 8 m²

TOTAL 64 m²

ISSUE A: 14.06.2014



Please note that this floor plan was produced prior to completion of construction and is intended to serve as a guide only. The information contained herein is believed to be correct but is not guaranteed. Dimensions are approximate. Changes may be made during construction and dimensions, areas, fittings, finishes and specifications are subject to change without notice in accordance with the provisions of the Contract for Sale of Land. Prospective purchasers must refer to the Contract for Sale of Land for the list of inclusions. Any plantings shown are indicative only. Prospective purchasers must rely on their own enquiries. All graphics, including tile layout, balustrades, louvres and sunshading devices are indicative only. Note: Bulkheads necessary for services are not depicted. Floor plans may be at an unspecified scale. This drawing and the design herein is the property of Rose Architectural Design and shall not be copied or reproduced in part or in whole without written permission.