



28/1 Palm Avenue Breakfast Point NSW

2 2 1

Positioned in one of Breakfast Point's most esteemed buildings, Endeavour and located just 150m to the waterfront, this north east facing two bedroom apartment is the perfect combination of space, luxury, and location. Offering an expansive floor plan with a wide outdoor entertainers terrace to enjoy the garden views of the Harbour precinct, widely regarded as the premier locale within Breakfast Point.

Additional Features:

- Spacious lounge/dining, flooded with natural light
- Ideal layout with master bedroom and guest bedroom well separated
- Miele gas kitchen with 40mm Caesarstone benchtops and breakfast bar

Type : Apartment
Price : \$ 1,560,000
Building Size : 116 sqm
View : <https://www.pointresidential.com.au/8358782>



Ashley Quinn
02 8765 8300

[For full version visit the website](https://www.pointresidential.com.au)



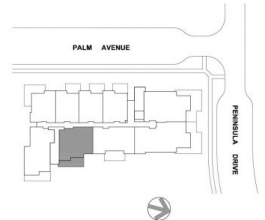
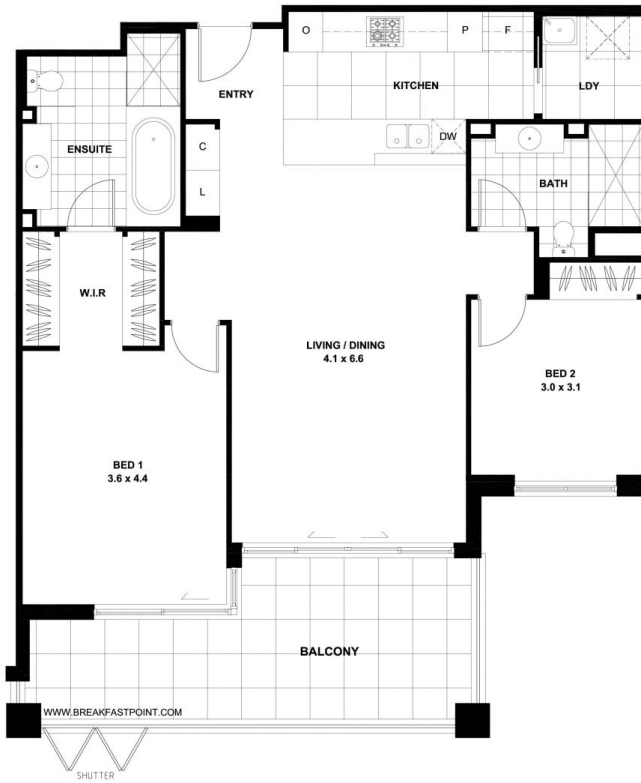
ENDEAVOUR

No. 1 Palm Avenue

Apartment No. 28

Lot No. 17

ISSUE A: 01.07.2011



FLOOR AREA	98 sqm
BALCONY	18 sqm
TOTAL	116 sqm

Please note that this floor plan was produced prior to completion of construction and is intended to serve as a guide only. The information contained herein is believed to be correct but is not guaranteed. Dimensions are approximate. Changes may be made during construction and dimensions, areas, fittings, finishes and specifications are subject to change without notice in accordance with the provisions of the Contract for Sale of Land. Prospective purchasers must refer to the Contract for Sale of Land for the list of inclusions. Any plantings shown are indicative only. Prospective purchasers must rely on their own enquiries. All graphics, including the layout, balustrades, barrows and surrounding devices are indicative only. Note: Bulkheads necessary for services are not depicted. Floor plans may be at an unspecified scale.