

512/10-16 Vineyard Way Breakfast Point NSW

2 2 2

Offering some of the most spectacular views in all of Breakfast Point, this top floor two bedroom plus study apartment is designed for the entertainer. With all primary rooms opening on to the enormous 28sqm terrace, there is plenty of room for family and friends. Positioned on the top floor, eastern side of the just renovated Norfolk building, you will never tire of the magical sunrises.

Additional Features:

- Miele gas kitchen with adjoining laundry with additional storage space
- Two bedrooms positioned either side of the central lounge room
- Two bathrooms including an ensuite with frameless glass shower and stone encased bath

Type : Apartment

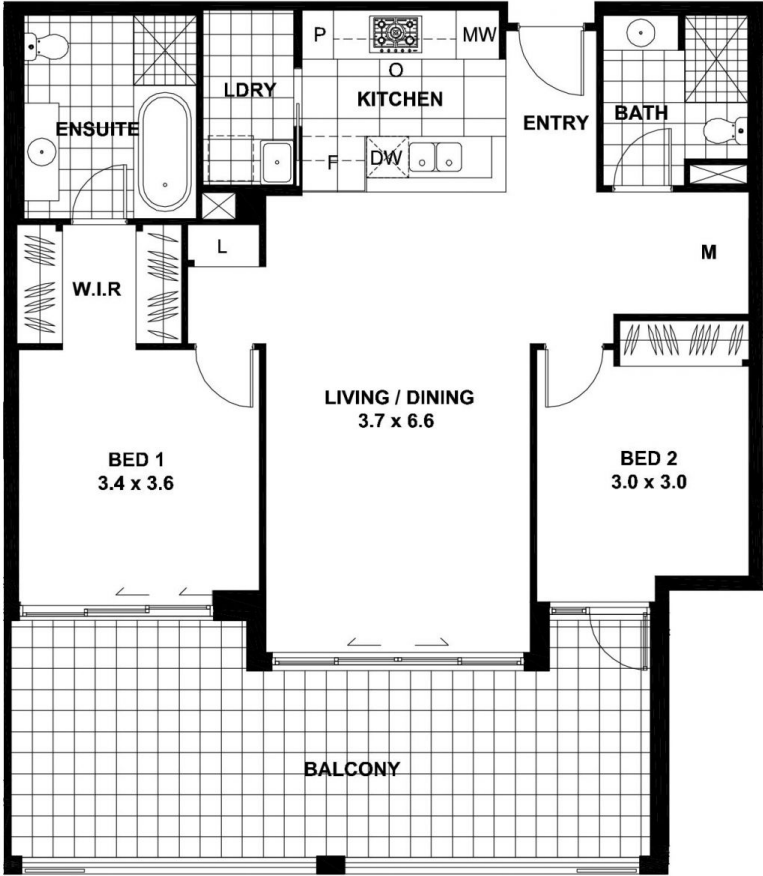
Price : \$ 1,888,000

View : <https://www.pointresidential.com.au/8261267>



Ashley Quinn
02 8765 8300

[For full version visit the website](https://www.pointresidential.com.au)



SHUTTER

SHUTTER