



**18/1 Palm Avenue Breakfast Point NSW**

2 2 1

Spacious, elegant and flooded with natural light, this beautiful apartment combines generous proportions with a contemporary and seamless indoor/outdoor design that takes full advantage of its garden setting. An entertainer's dream just 100m from the foreshore.

**Type** : Apartment  
**Price** : \$ 1,725,000  
**View** : <https://www.pointresidential.com.au/7894930>

**Additional Features**

- Large undercover entertainer's terrace with direct access to the common area gardens and pool
- State of the Art chef's kitchen, Miele appliances, stone benchtops and breakfast bar
- Substantial master bedroom with walk through robes and stunning ensuite
- Second double size bedroom with built-ins and adjacent luxurious guest bathroom



**Ashley Quinn**  
**02 8765 8300**

[For full version visit the website](https://www.pointresidential.com.au)

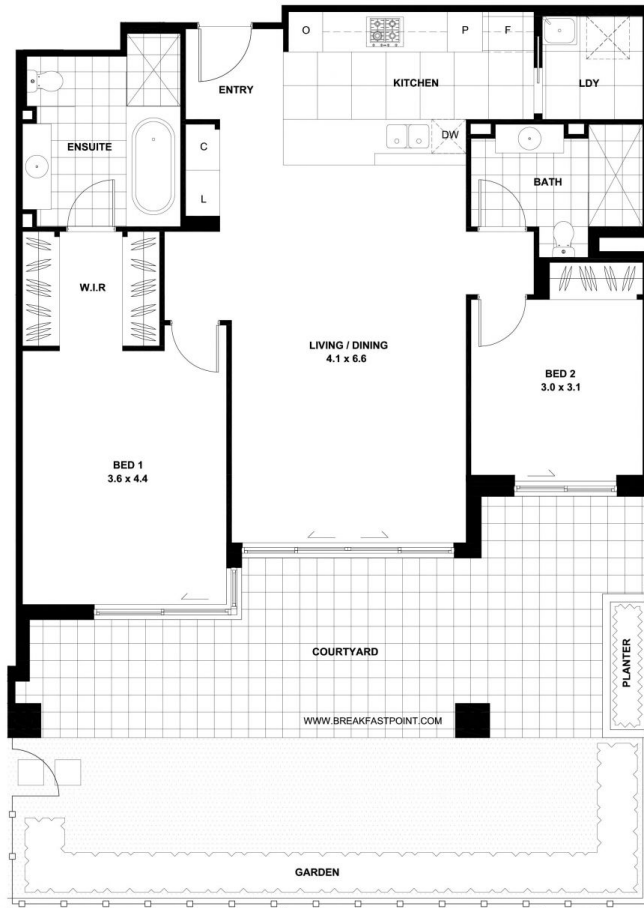
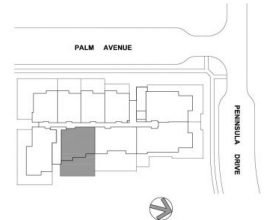


# ENDEAVOUR

No. 1 Palm Avenue

Apartment No. 18  
Lot No. 08

ISSUE A: 01.07.2011



FLOOR AREA	98 sqm
COURTYARD	64 sqm
<b>TOTAL</b>	<b>162 sqm</b>

Please note that this floor plan was produced prior to completion of construction and is intended to serve as a guide only. The information contained herein is believed to be correct but is not guaranteed. Dimensions are approximate. Changes may be made during construction and dimensions, areas, fittings, finishes and specifications are subject to change without notice in accordance with the provisions of the Contract for Sale of Land. Prospective purchasers must refer to the Contract for Sale of Land for the list of inclusions. Any plantings shown are indicative only. Prospective purchasers must rely on their own enquiries. All graphics, including the layout, balustrades, barneys and sunshading devices are indicative only. Note: Bulkheads necessary for services are not depicted. Floor plans may be at an unspecified scale.